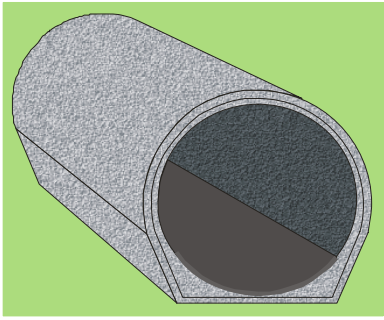
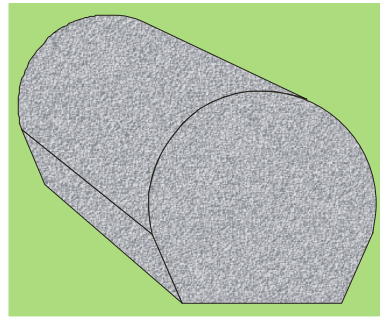


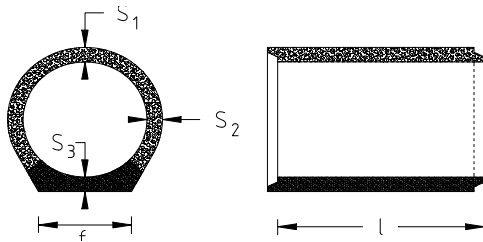
HydroCon Permeable Concrete Pipes



Linear



End Plated



- ¹ Load testing conducted by University of Technology Sydney
- ² Derived from laboratory tests conducted in Germany on similar permeable pipes

Dimensions		
Diameter (internal)		500 mm
Length	l	1000 mm
Wall thickness	s	S ₁ 60 mm; S ₂ 62 mm; S ₃ 70 mm
Base width	f	410 mm
Dry weight		245 kg (linear pipe)
Load capacity ¹		25 kN
Cross section area		Internal 0.196 m ² External 0.305 m ²
Storage capacity		0.196 m ² (196 litres)
Earth displacement		0.305 m ²

Exfiltration Rate ²

Pressure Head m	Min l/(s x m)	Max l/(s x m)	Notes: Minimum and maximum exfiltration rates for 500 mm diameter HydroCon pipes relate to a standard linear pipe with sealed invert. Sealing reduces the potential internal permeable area of the pipe by 25 percent. Maximum rates have been extrapolated from laboratory test results. Minimum rates have been calculated.
0.15	1.2	3.5	
0.65	1.9	5.8	
1.15	2.4	7.1	
1.65	3.0	8.8	
2.15	3.3	9.7	